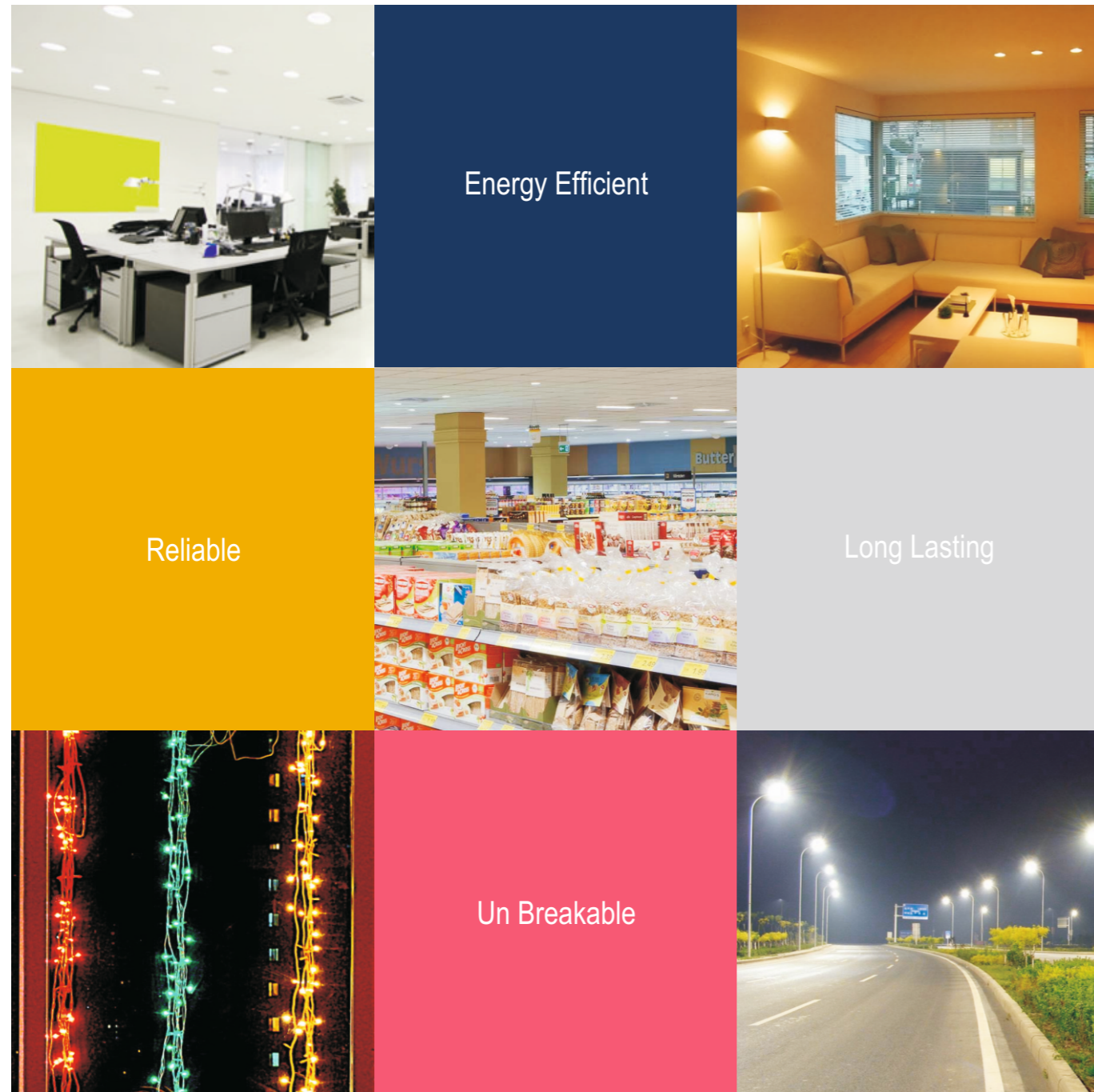




LED



LED



Our mission is to design, develop, manufacture and deliver the most reliable and energy efficient lighting products with greatest durability, consistency and longest product life



Most Advanced, Efficient and Intelligent Lighting Solutions for Our World

Terraton Energy Pvt. Ltd
 Plot No.64,Phase 1,IDA, Cherlapally,
 HCL Post,Hyderabad- 500 051.
 Telangana,India.



Terraton LED Lighting

About Terra

- 20 Years + in business - focused on serving the OEM market.
- Fully integrated design, manufacturing and after sales network.
- Made in the INDIA following strict processes and ISO9001 and ISO14001 standards.
- Long and successful track record of serving tier -1 industrial OEMs across the world.
- Leading innovator in Switch Mode Power Supply & BLDC drive solutions.
- Country wide distribution, sales and service support.

Product Features

- Wide input operating voltage range.
- 440V input over voltage protection with auto recovery.
- 6KV on board + 20KV built in surge protection.
- Very low THDi <10%.
- PF >0.95.
- Available input power from 15W to 250W.
- Output voltage 72VDC.
- Osram, Bridgelux, Everlight, Seoul LEDs.
- System efficacy 100lm/W,130lm/W.
- CCT from 2700k to 6500k available.
- CRI >80.
- Beam angle >120°.
- IP65/66/67 rated.
- CC type LED current control.
- IK07/ IK08 rated impact resistance.
- Life >50,000Hrs.
- ADC 12 grade aluminium die cast body.
- Automatic Dusk - Dawn available (Optional).
- 1/2/5Yrs warranty.



Surge Protection + EMI Device

20KV	SPDIP6720K	IP67
Input Voltage: 140-440VAC	Rating: 20KV/10KA	Dimensions: L93 x W33.5 x H27.5
Construction: Closed Metal	Wire: L-N in & L-N out	Mode: DM
Load: <100W	EMI Filter: On board	

20KV	SPDIPHW20KV	IP67
Input Voltage: 140-440VAC	Rating: 20KV/10KA	Dimensions: L99 X W39 XH35
Construction: Closed Metal	Wire: L-N in & L-N out	Mode : DM
Load: <250W	EMI Filter: On board	

Constant Voltage Series

12W	STFK120100
Input Voltage: 140-300VAC	Output Voltage: 12V
Output Current: 1A	Dimensions: L61.5 x W30.5 x H21.5
Regulation: Constant Voltage	Protection: OL,OT,OV....

24W	CAFK120200
Input Voltage: 140-300VAC	Output Voltage: 12V
Output Current: 2A	Dimensions: L125 x W60 x H32
Regulation: Constant Voltage	Protection: OL,OT,OV....

36W	CAFK120300
Input Voltage: 140-300VAC	Output Voltage: 12V
Output Current: 3A	Dimensions: L125 x W60 x H32
Regulation: Constant Voltage	Protection: OL,OT,OV....

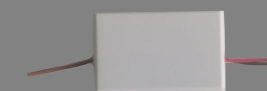
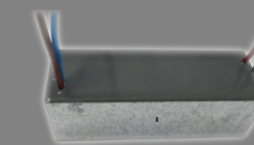
60W	EIFK120500
Input Voltage: 140-300VAC	Output Voltage: 12V
Output Current: 5A	Dimensions: L182 x W65 x H41
Regulation: Constant Voltage	Protection: OL,OT,OV....

96W	EIFK120800
Input Voltage: 140-300VAC	Output Voltage: 12V
Output Current: 8A	Dimensions: L182 x W65 x H41
Regulation: Constant Voltage	Protection: OL,OT,OV....

400W	STFK120033
Input Voltage: 170-300VAC	Output Voltage: 12V
Output Current: 33A	Dimensions: L210 x W120 x H56
Regulation: Constant Voltage	Protection: OL,OT,OV....

AUTOMATIC STREET LIGHT CONTROLLER

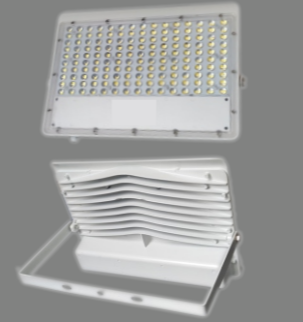
Input Voltage: 150-280VAC	Sensing: Ambient+Timer	Dimensions: L460 x W390 x H155
Output Voltage: 230VAC,1P	Load Capacity: 2500W	Surge: 20KV
UV Cut-off: <150V	OV Cut-off: >270V	OL Cut-off: >40A
Switch on: <50lux ± 10lux	Switch off: >20lux ± 10lux	



150W	FLLCBK150W	IP65
Input Voltage: 140-300VAC	Output Voltage: 72V	Output Current: 0.98A ± 30mA (Dual Outputs)
Luminous Efficacy: 110lm/W	Luminous Flux: >16500lm	CCT: 3000K / 6500K
Surge: 6KV+10KV / 6KV+20KV	Dimensions: L321 x W280 x H66	



200W	FLLCBK200W	IP65
Input Voltage: 140-300VAC	Output Voltage: 72V	Output Current: 1.35A ± 50mA (Dual Outputs)
Luminous Efficacy: 100lm/W	Luminous Flux: >20000lm	CCT: 3000K / 6500K
Surge: 6KV+10KV / 6KV+20KV	Dimensions: L389 x W293 x H66	



Well Glass Series

40W	WGLICBK040	IP65
Input Voltage: 140-300VAC	Output Voltage: 72V	Output Current: 500mA ± 30mA
Luminous Efficacy: 105lm/W	Luminous Flux: >4200lm	CCT: 3000K / 6500K
Surge: 6KV+10KV / 6KV+20KV	Dimensions: L163 x W150 x H145	



50W	WGLICBK050	IP65
Input Voltage: 140-300VAC	Output Voltage: 72V	Output Current: 630mA ± 30mA
Luminous Efficacy: 95lm/W	Luminous Flux: >4750lm	CCT: 3000K / 6500K
Surge: 6KV+10KV / 6KV+20KV	Dimensions: L202 x W169.5 x H163.5	



70W	WGLIDBK070	IP65
Input Voltage: 140-300VAC	Output Voltage: 72V	Output Current: 950mA ± 30mA
Luminous Efficacy: 110lm/W	Luminous Flux: >7700lm	CCT: 3000K / 6500K
Surge: 6KV+10KV / 6KV+20KV	Dimensions: L279 x W219 x H214.5	



Surge Protection Devices

20KV	SPDPAB20KV	IP66
Input Voltage: 140-440VAC	Rating: 20KV/10KA	Dimensions: L61.5 x W30.5 x H21.5
Construction: Closed	Wire: L-N	Mode: DM

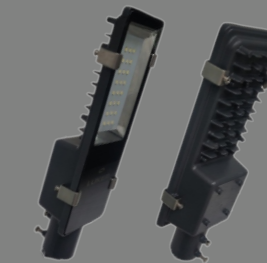


20KV	SPDPUA20KV	IP50
Input Voltage: 140-440VAC	Rating: 20KV/10KA	Dimensions: L60 X W28 XH9.5
Construction: Sleeved	Wire: L-N	Mode: DM



Glass Series

15W	SLICBJK015	IP65
Input Voltage: 140-300VAC	Output Voltage: 72V	Output Current: 180mA ± 30mA
Luminous Efficacy: 110lm/W	Luminous Flux: >1650lm	CCT: 3000K / 6500K
Surge: 6KV+10KV / 6KV+20KV	Dimensions: L280 x W96 x H55	Suitable pipe dia: < 30mm / 1.18Inch



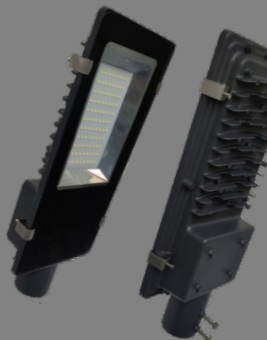
24W	SLICBJK024	IP65
Input Voltage: 140-300VAC	Output Voltage: 72V	Output Current: 300mA ± 30mA
Luminous Efficacy: 110lm/W	Luminous Flux: >2640lm	CCT: 3000K / 6500K
Surge: 6KV+10KV / 6KV+20KV	Dimensions: L338 x W112.5 x H65	Suitable pipe dia: < 40mm / 1.57Inch



36W	SLICFBK036	IP65
Input Voltage: 140-300VAC	Output Voltage: 72V	Output Current: 450mA ± 30mA
Luminous Efficacy: 110lm/W	Luminous Flux: >3960lm	CCT: 3000K / 6500K
Surge: 6KV+10KV / 6KV+20KV	Dimensions: L338 x W112.5 x H65	Suitable pipe dia: < 40mm / 1.57Inch

40W	SLICFBK040	IP65
Input Voltage: 140-300VAC	Output Voltage: 72V	Output Current: 500mA ± 30mA
Luminous Efficacy: 100lm/W	Luminous Flux: >4000lm	CCT: 3000K / 6500K
Surge: 6KV+10KV / 6KV+20KV	Dimensions: L338 x W112.5 x H65	Suitable pipe dia: < 40mm / 1.57Inch

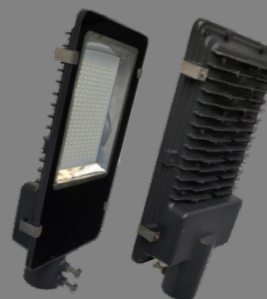
48W	SLICDBK048	IP65
Input Voltage: 140-300VAC	Output Voltage: 72V	Output Current: 600mA ± 30mA
Luminous Efficacy: 100lm/W	Luminous Flux: >4800lm	CCT: 3000K / 6500K
Surge: 6KV+10KV / 6KV+20KV	Dimensions: L376 x W150 x H62.7	Suitable pipe dia: < 40mm / 1.57Inch



60W	SLICCMB060	IP65
Input Voltage: 140-300VAC	Output Voltage: 72V	Output Current: 750mA ± 30mA
Luminous Efficacy: 100lm/W	Luminous Flux: >6000lm	CCT: 3000K / 6500K
Surge: 6KV+10KV / 6KV+20KV	Dimensions: L376 x W150 x H62.7	Suitable pipe dia: < 40mm / 1.57Inch

72W	SLICAMB072	IP65
Input Voltage: 140-300VAC	Output Voltage: 72V	Output Current: 950mA ± 30mA
Luminous Efficacy: 105lm/W	Luminous Flux: >7560lm	CCT: 3000K / 6500K
Surge: 6KV+10KV / 6KV+20KV	Dimensions: L376 x W150 x H62.7	Suitable pipe dia: < 40mm / 1.57Inch

90W	SLICBNB090	IP65
Input Voltage: 140-300VAC	Output Voltage: 72V	Output Current: 1.20A ± 50mA
Luminous Efficacy: 100lm/W	Luminous Flux: >9000lm	CCT: 3000K / 6500K
Surge: 6KV+10KV / 6KV+20KV	Dimensions: L400 x W198 x H71	Suitable pipe dia: < 50mm / 1.96Inch



120W	SLICEBK120	IP65
Input Voltage: 140-300VAC	Output Voltage: 72V	Output Current: 1.50A ± 75mA
Luminous Efficacy: 100lm/W	Luminous Flux: >12000lm	CCT: 3000K / 6500K
Surge: 6KV+10KV / 6KV+20KV	Dimensions: L436 x W213 x H71.5	Suitable pipe dia: < 50mm / 1.96Inch



160W	SLICBNB160	IP65
Input Voltage: 140-300VAC	Output Voltage: 72V	Output Current: 1.0A ± 50mA ^(Dual Outputs)
Luminous Efficacy: 100lm/W	Luminous Flux: >16000lm	CCT: 3000K / 6500K
Surge: 6KV+10KV / 6KV+20KV	Dimensions:L515 x W265 x H74	Suitable pipe dia: < 50mm / 1.96Inch

200W	SLICBNB200	IP65
Input Voltage: 140-300VAC	Output Voltage: 72V	Output Current: 0.88A ± 50mA ^(Three Outputs)
Luminous Efficacy: 100lm/W	Luminous Flux: >20000lm	CCT: 3000K / 6500K
Surge: 6KV+10KV / 6KV+20KV	Dimensions:L515 x W265 x H74	Suitable pipe dia: < 50mm / 1.96Inch

250W	SLICBNB250	IP65
Input Voltage: 140-300VAC	Output Voltage: 72V	Output Current: 1.10A ± 50mA ^(Three Outputs)
Luminous Efficacy: 95lm/W	Luminous Flux: >23750lm	CCT: 3000K / 6500K
Surge: 6KV+10KV / 6KV+20KV	Dimensions:L608 x W340 x H82	Suitable pipe dia: < 55mm / 2.16Inch

Lens Series

15W	SLLIBJK015	IP65
Input Voltage: 140-300VAC	Output Voltage: 72V	Output Current: 180mA ± 30mA
Luminous Efficacy: 115lm/W	Luminous Flux: >1725lm	CCT: 3000K / 6500K
Surge: 6KV+10KV / 6KV+20KV	Dimensions:L300 x W106 x H55	Suitable pipe dia: < 40mm / 1.57Inch

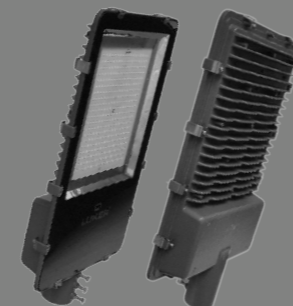
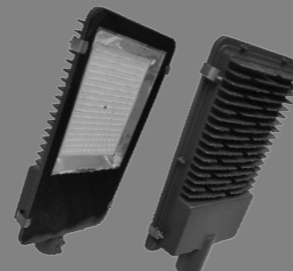
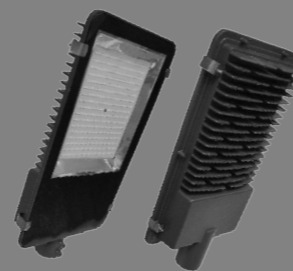
20W	SLLIBJK020	IP65
Input Voltage: 140-300VAC	Output Voltage: 72V	Output Current: 250mA ± 30mA
Luminous Efficacy: 115lm/W	Luminous Flux: >2300lm	CCT: 3000K / 6500K
Surge: 6KV+10KV / 6KV+20KV	Dimensions:L300 x W106 x H55	Suitable pipe dia: < 40mm / 1.57Inch

24W	SLLIBJK024	IP65
Input Voltage: 140-300VAC	Output Voltage: 72V	Output Current: 300mA ± 30mA
Luminous Efficacy: 115lm/W	Luminous Flux: >2760lm	CCT: 3000K / 6500K
Surge: 6KV+10KV / 6KV+20KV	Dimensions:L300 x W106 x H55	Suitable pipe dia: < 40mm / 1.57Inch

30W	SLLIBJK030	IP65
Input Voltage: 140-300VAC	Output Voltage: 72V	Output Current: 370mA ± 30mA
Luminous Efficacy: 110lm/W	Luminous Flux: >3300lm	CCT: 3000K / 6500K
Surge: 6KV+10KV / 6KV+20KV	Dimensions:L300 x W106 x H55	Suitable pipe dia: < 40mm / 1.57Inch

36W	SLLICBK036	IP65
Input Voltage: 140-300VAC	Output Voltage: 72V	Output Current: 450mA ± 30mA
Luminous Efficacy: 105lm/W	Luminous Flux: >3780lm	CCT: 3000K / 6500K
Surge: 6KV+10KV / 6KV+20KV	Dimensions:L300 x W106 x H55	Suitable pipe dia: < 40mm / 1.57Inch

40W	SLLICBK040	IP65
Input Voltage: 140-300VAC	Output Voltage: 72V	Output Current: 500mA ± 30mA
Luminous Efficacy: 100lm/W	Luminous Flux: >4000lm	CCT: 3000K / 6500K
Surge: 6KV+10KV / 6KV+20KV	Dimensions:L300 x W106 x H55	Suitable pipe dia: < 40mm / 1.57Inch



100W	FLCDBK100W	IP65
Input Voltage: 140-300VAC	Output Voltage: 72V	Output Current: 650mA ± 30mA ^(Dual Outputs)
Luminous Efficacy: 100lm/W	Luminous Flux: >10000lm	CCT: 3000K / 6500K
Surge: 6KV+10KV / 6KV+20KV	Dimensions: L282.5 x W271 x H66	

150W	FLCDBK150W	IP65
Input Voltage: 140-300VAC	Output Voltage: 72V	Output Current: 650mA ± 30mA ^(Three Outputs)
Luminous Efficacy: 100lm/W	Luminous Flux: >15000lm	CCT: 3000K / 6500K
Surge: 6KV+10KV / 6KV+20KV	Dimensions: L366 x W288 x H63	

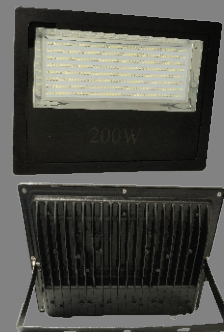
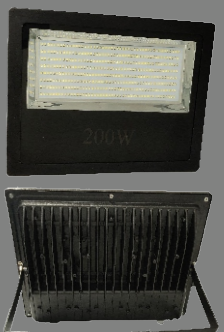
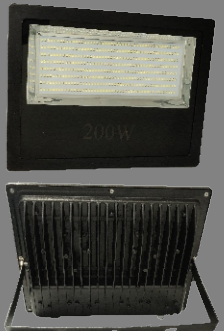
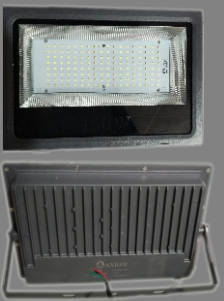
200W	FLCDBK200W	IP65
Input Voltage: 140-300VAC	Output Voltage: 72V	Output Current: 650mA ± 30mA ^(Four Outputs)
Luminous Efficacy: 95lm/W	Luminous Flux: >19000lm	CCT: 3000K / 6500K
Surge: 6KV+10KV / 6KV+20KV	Dimensions: L366 x W288 x H63	

250W	FLCDBK250W	IP65
Input Voltage: 140-300VAC	Output Voltage: 72V	Output Current: 1.10A ± 50mA ^(Three Outputs)
Luminous Efficacy: 95lm/W	Luminous Flux: >23750lm	CCT: 3000K / 6500K
Surge: 6KV+10KV / 6KV+20KV	Dimensions: L395 x W336 x H87	

Lens Series

50W	FLLCBK050W	IP65
Input Voltage: 140-300VAC	Output Voltage: 72V	Output Current: 630mA ± 30mA
Luminous Efficacy: 115lm/W	Luminous Flux: >5750lm	CCT: 3000K / 6500K
Surge: 6KV+10KV / 6KV+20KV	Dimensions: L230 x W184 x H56	

100W	FLLCBK100W	IP65
Input Voltage: 140-300VAC	Output Voltage: 72V	Output Current: 1.35A ± 50mA
Luminous Efficacy: 110lm/W	Luminous Flux: >11000lm	CCT: 3000K / 6500K
Surge: 6KV+10KV / 6KV+20KV	Dimensions: L276 x W212 x H57	



Lens + Sensor + PIR Series

Lens + Sensor + PIR	SLLCPIR48W	IP65
Input Voltage: 140-300VAC	Output Voltage: 72V	Output Current: 0.30A ± 30mA ^(Dual Outputs)
Luminous Efficacy: 100lm/W	Luminous Flux: >4800lm	CCT: 3000K / 6500K
Surge: 6KV+10KV / 6KV+20KV	Dimensions: L356 x W126 x H56	Suitable pipe dia: < 40mm / 1.57Inch

Note: Available Models - 15W,20W,24W,30W,36W,40W,48W,50W,60W,72W,80W,90W,100W,120W,150W,160W,180W,200W.



Eco UL Series

15W STREET LIGHT	SLPCBIK015	IP65
Input Voltage: 140-300VAC	Output Voltage: 72V	Output Current: 180mA ± 30mA
Luminous Efficacy: 105lm/W	Luminous Flux: >1575lm	CCT: 3000K / 6500K
Surge: 4KV / 6KV	Dimensions: L309 x W100 x H49.4	Suitable pipe dia: < 30mm / 1.18Inch

24W STREET LIGHT	SLPCBIK024	IP65
Input Voltage: 140-300VAC	Output Voltage: 72V	Output Current: 300mA ± 30mA
Luminous Efficacy: 105lm/W	Luminous Flux: >2520lm	CCT: 3000K / 6500K
Surge: 4KV / 6KV	Dimensions: L309 x W100 x H49.4	Suitable pipe dia: < 30mm / 1.18Inch



Glass Series

10W	FLCDBK010W	IP65
Input Voltage: 140-300VAC	Output Voltage: 72V	Output Current: 120mA ± 30mA
Luminous Efficacy: 100lm/W	Luminous Flux: >1000lm	CCT: 3000K / 6500K
Surge: 6KV+10KV / 6KV+20KV	Dimensions: L143 x W101 x H38.5	

20W	FLCDBK020W	IP65
Input Voltage: 140-300VAC	Output Voltage: 72V	Output Current: 250mA ± 30mA
Luminous Efficacy: 100lm/W	Luminous Flux: >2000lm	CCT: 3000K / 6500K
Surge: 6KV+10KV / 6KV+20KV	Dimensions: L143 x W101 x H38.5	

30W	FLCDBK030W	IP65
Input Voltage: 140-300VAC	Output Voltage: 72V	Output Current: 370mA ± 30mA
Luminous Efficacy: 100lm/W	Luminous Flux: >3000lm	CCT: 3000K / 6500K
Surge: 6KV+10KV / 6KV+20KV	Dimensions: L155 x W130 x H47	

50W	FLCDBK050W	IP65
Input Voltage: 140-300VAC	Output Voltage: 72V	Output Current: 650mA ± 30mA
Luminous Efficacy: 100lm/W	Luminous Flux: >5000lm	CCT: 3000K / 6500K
Surge: 6KV+10KV / 6KV+20KV	Dimensions: L226.5 x W221.5 x H54	



48W	SLLCBK048	IP65
Input Voltage: 140-300VAC	Output Voltage: 72V	Output Current: 600mA ± 30mA
Luminous Efficacy: 100lm/W	Luminous Flux: >4800lm	CCT: 3000K / 6500K
Surge: 6KV+10KV / 6KV+20KV	Dimensions: L356 x W126 x H56	Suitable pipe dia: < 40mm / 1.57Inch

50W	SLLCBK050	IP65
Input Voltage: 140-300VAC	Output Voltage: 72V	Output Current: 630mA ± 30mA
Luminous Efficacy: 100lm/W	Luminous Flux: >5000lm	CCT: 3000K / 6500K
Surge: 6KV+10KV / 6KV+20KV	Dimensions: L356 x W126 x H56	Suitable pipe dia: < 40mm / 1.57Inch

60W	SLCIDBK060	IP65
Input Voltage: 140-300VAC	Output Voltage: 72V	Output Current: 750mA ± 30mA
Luminous Efficacy: 100lm/W	Luminous Flux: >6000lm	CCT: 3000K / 6500K
Surge: 6KV+10KV / 6KV+20KV	Dimensions: L356 x W126 x H56	Suitable pipe dia: < 40mm / 1.57Inch

72W	SLCIDBK072	IP65
Input Voltage: 140-300VAC	Output Voltage: 72V	Output Current: 950mA ± 30mA
Luminous Efficacy: 100lm/W	Luminous Flux: >7200lm	CCT: 3000K / 6500K
Surge: 6KV+10KV / 6KV+20KV	Dimensions: L356 x W126 x H56	Suitable pipe dia: < 40mm / 1.57Inch

80W	SLCIDBK080	IP65
Input Voltage: 140-300VAC	Output Voltage: 72V	Output Current: 1.0A ± 50mA
Luminous Efficacy: 100lm/W	Luminous Flux: >8000lm	CCT: 3000K / 6500K
Surge: 6KV+10KV / 6KV+20KV	Dimensions: L356 x W126 x H56	Suitable pipe dia: < 40mm / 1.57Inch

90W	SLCIDBK090	IP65
Input Voltage: 140-300VAC	Output Voltage: 72V	Output Current: 1.20A ± 50mA
Luminous Efficacy: 100lm/W	Luminous Flux: >9000lm	CCT: 3000K / 6500K
Surge: 6KV+10KV / 6KV+20KV	Dimensions: L407 x W164 x H56	Suitable pipe dia: < 40mm / 1.57Inch

100W	SLLEBK100	IP65
Input Voltage: 140-300VAC	Output Voltage: 72V	Output Current: 1.30A ± 50mA
Luminous Efficacy: 100lm/W	Luminous Flux: >10000lm	CCT: 3000K / 6500K
Surge: 6KV+10KV / 6KV+20KV	Dimensions: L407 x W164 x H56	Suitable pipe dia: < 40mm / 1.57Inch

120W	SLLEBK120	IP65
Input Voltage: 140-300VAC	Output Voltage: 72V	Output Current: 1.50A ± 75mA
Luminous Efficacy: 100lm/W	Luminous Flux: >12000lm	CCT: 3000K / 6500K
Surge: 6KV+10KV / 6KV+20KV	Dimensions: L407 x W164 x H56	Suitable pipe dia: < 40mm / 1.57Inch

150W	SLLEBK150	IP65
Input Voltage: 140-300VAC	Output Voltage: 72V	Output Current: 0.96A ± 50mA ^(Dual Outputs)
Luminous Efficacy: 95lm/W	Luminous Flux: >14250lm	CCT: 3000K / 6500K
Surge: 6KV+10KV / 6KV+20KV	Dimensions: L543 x W221 x H70	Suitable pipe dia: < 55mm / 2.16Inch

160W	SLLEBK160	IP65
Input Voltage: 140-300VAC	Output Voltage: 72V	Output Current: 1.0A ± 50mA ^(Dual Outputs)
Luminous Efficacy: 95lm/W	Luminous Flux: >15200lm	CCT: 3000K / 6500K
Surge: 6KV+10KV / 6KV+20KV	Dimensions: L543 x W221 x H70	Suitable pipe dia: < 55mm / 2.16Inch



180W	SLLIEBK180	IP65
Input Voltage: 140-300VAC	Output Voltage: 72V	Output Current: 0.75A ± 50mA ^(Three Outputs)
Luminous Efficacy: 95lm/W	Luminous Flux: >17100lm	CCT: 3000K / 6500K
Surge: 6KV+10KV / 6KV+20KV	Dimensions: L543 x W221 x H70	Suitable pipe dia: < 55mm / 2.16Inch

200W	SLLIEBK200	IP65
Input Voltage: 140-300VAC	Output Voltage: 72V	Output Current: 1.35A ± 50mA ^(Dual Outputs)
Luminous Efficacy: 90lm/W	Luminous Flux: >18000lm	CCT: 3000K / 6500K
Surge: 6KV+10KV / 6KV+20KV	Dimensions: L543 x W221 x H70	Suitable pipe dia: < 55mm / 2.16Inch

Glass + Lens Series

24W	SLLCJBK024	IP65/IP66
Input Voltage: 140-300VAC	Output Voltage: 72V	Output Current: 300mA ± 30mA
Luminous Efficacy: 100lm/W	Luminous Flux: >2400lm	CCT: 3000K / 6500K
Surge: 6KV+10KV / 6KV+20KV	Dimensions: L338 x W112.5 x H65	Suitable pipe dia: < 40mm / 1.57Inch

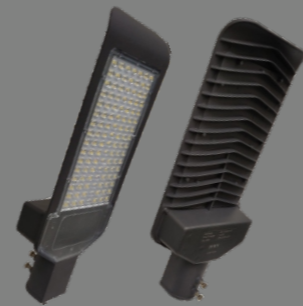
36W	SLLCFBK036	IP65/IP66
Input Voltage: 140-300VAC	Output Voltage: 72V	Output Current: 450mA ± 30mA
Luminous Efficacy: 100lm/W	Luminous Flux: >3600lm	CCT: 3000K / 6500K
Surge: 6KV+10KV / 6KV+20KV	Dimensions: L376 x W150 x H62.7	Suitable pipe dia: < 40mm / 1.57Inch

48W	SLLCDBK048	IP65/IP66
Input Voltage: 140-300VAC	Output Voltage: 72V	Output Current: 600mA ± 30mA
Luminous Efficacy: 100lm/W	Luminous Flux: >4800lm	CCT: 3000K / 6500K
Surge: 6KV+10KV / 6KV+20KV	Dimensions: L376 x W150 x H62.7	Suitable pipe dia: < 40mm / 1.57Inch

72W	SLLCMB072	IP65/IP66
Input Voltage: 140-300VAC	Output Voltage: 72V	Output Current: 950mA ± 30mA
Luminous Efficacy: 100lm/W	Luminous Flux: >7200lm	CCT: 3000K / 6500K
Surge: 6KV+10KV / 6KV+20KV	Dimensions: L376 x W150 x H62.7	Suitable pipe dia: < 40mm / 1.57Inch

90W	SLLCBNB090	IP65/IP66
Input Voltage: 140-300VAC	Output Voltage: 72V	Output Current: 1.20A ± 50mA
Luminous Efficacy: 100lm/W	Luminous Flux: >9000lm	CCT: 3000K / 6500K
Surge: 6KV+10KV / 6KV+20KV	Dimensions: L400 x W198 x H71	Suitable pipe dia: < 50mm / 1.96Inch

120W	SLLCEBK120	IP65/IP66
Input Voltage: 140-300VAC	Output Voltage: 72V	Output Current: 1.50A ± 75mA
Luminous Efficacy: 100lm/W	Luminous Flux: >12000lm	CCT: 3000K / 6500K
Surge: 6KV+10KV / 6KV+20KV	Dimensions: L436 x W213 x H71.5	Suitable pipe dia: < 50mm / 1.96Inch



160W	SLLCBNB160	IP65/IP66
Input Voltage: 140-300VAC	Output Voltage: 72V	Output Current: 1.0A ± 50mA ^(Dual Outputs)
Luminous Efficacy: 95lm/W	Luminous Flux: >15200lm	CCT: 3000K / 6500K
Surge: 6KV+10KV / 6KV+20KV	Dimensions: L515 x W265 x H74	Suitable pipe dia: < 50mm / 1.96Inch

200W	SLLCBNB200	IP65/IP66
Input Voltage: 140-300VAC	Output Voltage: 72V	Output Current: 0.88A ± 50mA ^(Three Outputs)
Luminous Efficacy: 95lm/W	Luminous Flux: >19000lm	CCT: 3000K / 6500K
Surge: 6KV+10KV / 6KV+20KV	Dimensions: L515 x W265 x H74	Suitable pipe dia: < 50mm / 1.96Inch

Glass + Sensor Series

GLASS + SENSOR	SLSCABK024	IP65
Input Voltage: 140-300VAC	Output Voltage: 72V	Output Current: 300mA ± 30mA
Luminous Efficacy: 110lm/W	Luminous Flux: >2640lm	CCT: 3000K / 6500K
Surge: 6KV+10KV / 6KV+20KV	Dimensions: L338 x W112.5 x H65	Suitable pipe dia: < 40mm / 1.57Inch

Note: Available Models - 15W,24W,36W,40W,48W,60W,72W,90W,120W,160W,200W,250W.

Lens + Sensor Series

LENS + SENSOR	SLLSCBK15W	IP65
Input Voltage: 140-300VAC	Output Voltage: 72V	Output Current: 180mA ± 30mA
Luminous Efficacy: 115lm/W	Luminous Flux: >1725lm	CCT: 3000K / 6500K
Surge: 6KV+10KV / 6KV+20KV	Dimensions: L300 x W106 x H55	Suitable pipe dia: < 40mm / 1.57Inch

Note: Available Models - 15W,20W,24W,30W,36W,40W,48W,50W,60W,72W,80W,90W,100W,120W,150W,160W,180W,200W.

Glass + Sensor + Timer Series

Glass + Sensor + Timer	SLSCIEK150	IP65
Input Voltage: 140-300VAC	Output Voltage: 72V	Output Current: 0.96A ± 50mA ^(Dual Outputs)
Luminous Efficacy: 100lm/W	Luminous Flux: >15000lm	CCT: 3000K / 6500K
Surge: 6KV+10KV / 6KV+20KV	Dimensions: L515 x W265 x H74	Suitable pipe dia: < 50mm / 1.96Inch

Note: Available Models - 72W,90W,120W,160W,200W,250W.

Lens + Sensor + Timer Series

Lens + Sensor + Timer	SLLSCIK150	IP65
Input Voltage: 140-300VAC	Output Voltage: 72V	Output Current: 0.96A ± 50mA ^(Dual Outputs)
Luminous Efficacy: 100lm/W	Luminous Flux: >15000lm	CCT: 3000K / 6500K
Surge: 6KV+10KV / 6KV+20KV	Dimensions: L543 x W221 x H70	Suitable pipe dia: < 55mm / 2.16Inch

Note: Available Models - 72W,90W,120W,160W,200W.

